

SCHOOL
Health Program



Healthy schools
Happy schools!



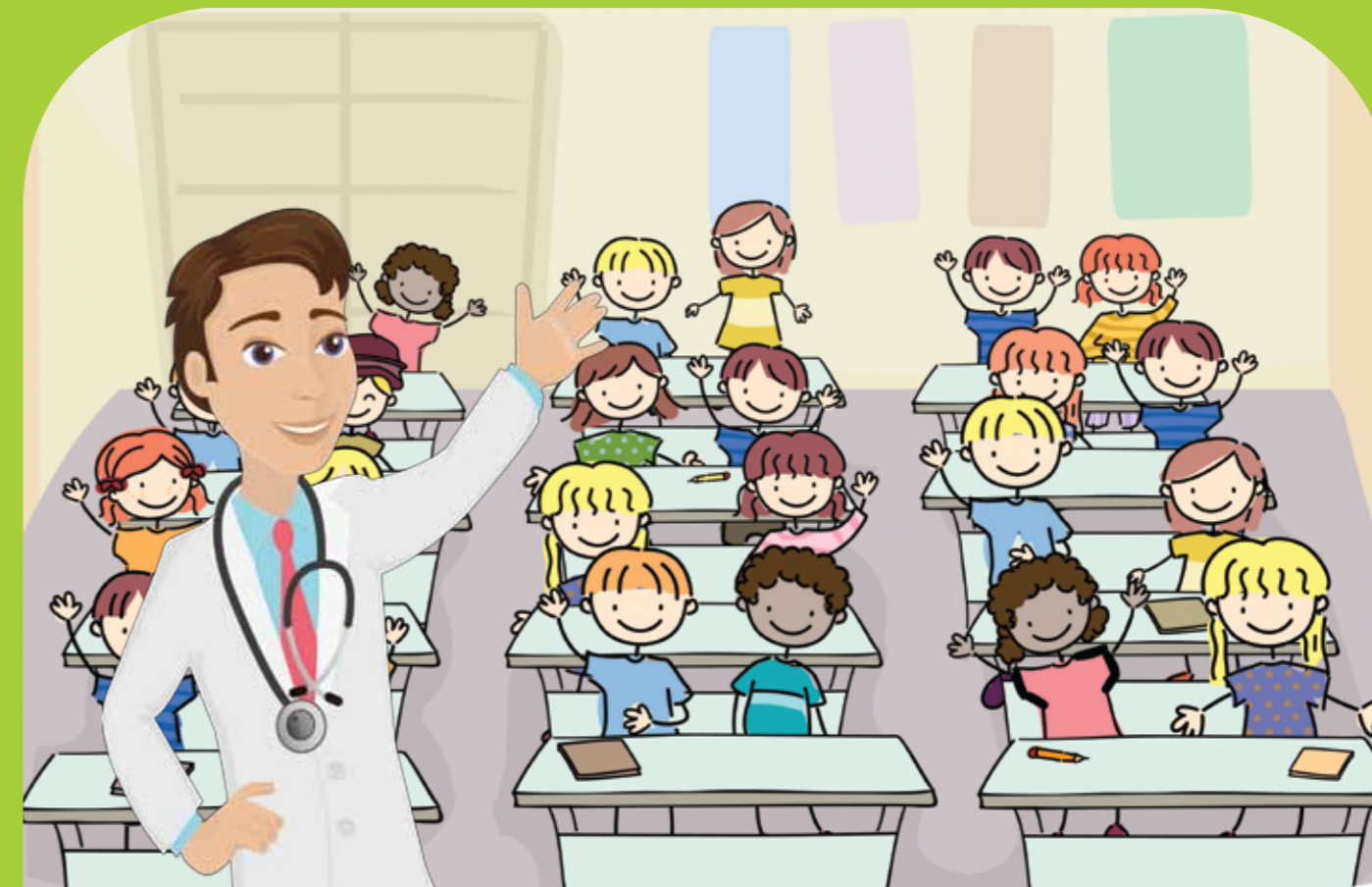
From the Founder's desk.

A lot has gone into the choice of the name AddressHealth. We are here to create new 'addresses' for health. We believe that parents and the community must 'address' children's health proactively. The World Health Organization puts a very useful and pithy definition to guide us: 'Health is a state of complete physical, mental and social wellbeing and not merely the absence of disease or infirmity'. Clearly, every society must strive to pursue health as an ideal state that can only be attained through a multidimensional approach. This, then, is the way we address the health of the children of our society. This is the mission that drives us on.

Schools - being the harbingers of the future - hold the primary responsibility of ensuring that the formative years of every child are healthy. We partner them in this mission. We have already empowered leading schools in Bangalore to deliver comprehensive school health programs that encompass eight dimensions; health education, physical activity, health services, nutritional services, psychosocial counselling services, healthy and safe school environment, staff health promotion and parent and community involvement. Thanks to the eager participation of our partner schools, AddressHealth has been demonstrably successful in making more than 40,000 students healthier. We have, besides, offered screening and counselling on asthma to over 50,000 children in Bangalore. That our endeavours have received widespread acclaim is clear from the fact that AddressHealth won the Stars in Global Health-7 awarded by the Grand Challenges Canada.

Our vision to make the primary healthcare continuum possible has met with resounding success. We hope that AddressHealth will lend its healing touch to many more children. We hope to partner with many more schools that value the health of their students, and recognize it as a future national resource.

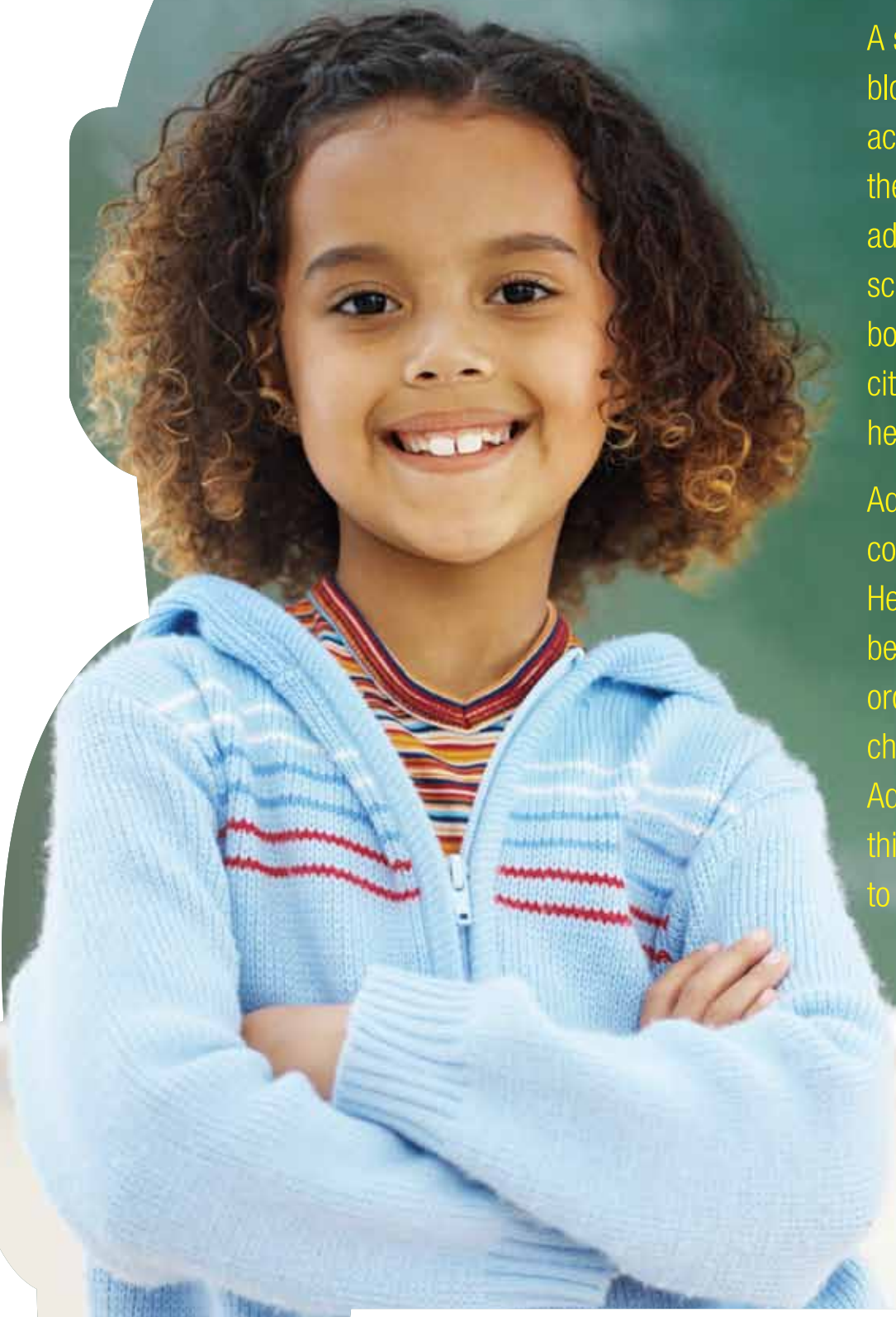
-- **Dr. Anand Lakshman**
Founder & CEO, AddressHealth



School & Pre-School Health Services



addresshealth
child specialty clinics



A school is a garden that helps individuals blossom to their fullest. It's here that children acquire knowledge and worldly wisdom, so that they may be ready to deal with the challenges of adulthood. But education is complete only when the school also helps its students understand their bodies, healthcare and hygiene. To give tomorrow's citizens a healthy foundation, schools must include healthcare and health education in their offering.

AddressHealth's School Health Service is a comprehensive package designed as per the World Health Organization's guidelines. It bridges the gap between schools and healthcare professionals in order to tackle modern day health issues faced by children in urban schools. As part of the AddressHealth network of child specialty clinics, this program partners with schools and pre-schools to bring better healthcare facilities to campuses.



New challenges

The concept of healthcare has undergone a paradigm shift in recent years. There is a big shift from institution-based, crisis-driven acute care to community based prevention, promotion, **early detection and disease management**; from 'cure in a hospital' to 'care in the community'. And sure enough, schools are important stakeholders in enabling this shift towards community-based health interventions.

Of course, school managements, boards and governments have always promoted healthy campus environments through numerous guidelines and policies. But the task has become admittedly more complex, thanks to the dynamic health needs of the day. It's no longer enough for schools to fulfill mandatory requirements of annual health checks. They are also required to deal with evolving child health issues such as **behavioral and emotional problems, allergy triggers, unhealthy food habits, daytime mosquito bites, health awareness and education, to name a few.**

"There is an urgent need to address a basic gap in schooling that has crept in over the years. School Health has somehow been relegated to sporadic health check-ups or in some cases a few hours of health instruction in the curriculum. It was imperative that something is done urgently to take up the issue of holistic health in school-going children which includes physical, mental, emotional and psychological health"

— CBSE circular dt. June 2008

It is easier to build strong children than to repair broken men.

-- Frederick Douglass

AddressHealth and its stakeholders

AddressHealth was founded in March 2010 with the vision of **making the pediatric primary care continuum possible**. It does this by keeping its integrated child health clinics as a base from where it reaches out to schools, pre-schools and residential groups.

Unitus Seed Fund

In its mission to **gift the children of India a healthy future**, AddressHealth is partnered and powered by India's most active seed stage impact fund Unitus Seed Fund.

Unitus Seed invests in start-ups serving large, underserved low-income populations, also helping them 'prepare for growth' using seed funding, strategic and operational support, providing critical connections, and securing growth capital. The fund Investors feature illustrious names like **Mr. Bill Gates, Mr. Mohandas Pai, Mr. Ranjan Pai and Mr. V Balakrishnan**.

Grand Challenges Canada

AddressHealth has won the Stars in Global Health-7 awarded by the Grand Challenges Canada. The award is in recognition of our innovative work in school health, specifically the tele-enabled school health centres we are setting up in schools. Grand Challenges Canada is funded by the Government of Canada and is dedicated to supporting **Bold Ideas with Big Impact in global health**.

**unitus
seed fund**



Project supported by:
Grand Challenges Canada
Grands Défis Canada

He who has health, has hope; and he who has hope, has everything.

-- *Thomas Carlyle*

The global prescription

In 2008 the World Health Organization pointed out the importance of imparting health awareness, **inculcating healthy behavior and delivering healthcare to children in schools**. The WHO went on to summarize a balanced approach with eight different components of school health.



← The eight components of school health as recommended by WHO.

These services, delivered through the school, **build the health of children as a future national**, even global, resource. It's on the basis of this globally revered prescription that the AddressHealth School Health Program is designed.



addresshealth
child specialty clinics

AddressHealth Clinics

133, II Floor, Bank of Baroda Building, Behind Shiv Sagar, Hulimavu Gate, Bannerghatta Road, Bangalore - 560076. Ph: **+91-81056-98888**

5, I Floor, Telecom Employees Co-operative Society, Chikkalasandra, Uttarahalli Main Road, Bangalore - 560061. Ph: **+91-89711-68888**

14, Kaikondrahalli, Sarjapur Road, Bangalore - 560035. Ph: **+91-81056-98888**

AddressHealth Corporate Office

692, I Floor, 11th 'A' Main Road, Jayanagar 5th Block, Bangalore - 560041. Ph: **+91-80-22444232**

www.addresshealth.com